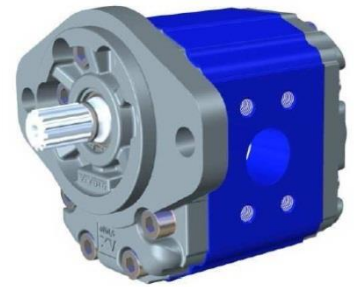


## Hydromotory XV-3M Ø101,6 SAE B s prírubovými prípojmí

Geometrický objem	14,89 ... 86,87 cm <sup>3</sup> /ot
Max. krútiaci moment	117,52 Nm pri 1000 ot/min a 10MPa
Max. pracovný tlak	32 MPa
Rozsah otáčok	700 ... 3000 ot/min
Rozsah prac. teplôt	- 20 ÷ 60 °C
Odporúčaná viskozita	20 ... 100 mm <sup>2</sup> /s



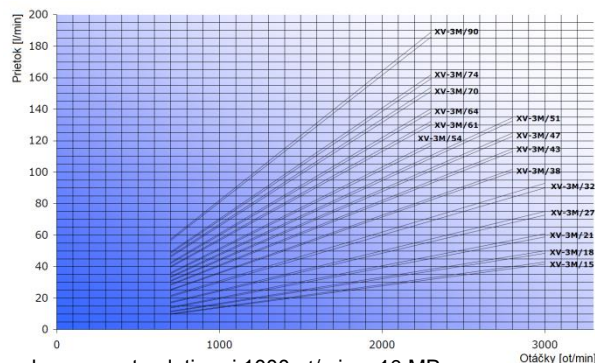
3

## TECHNICKÉ ÚDAJE

Typ	Objednávacie číslo		Geom. objem [cm <sup>3</sup> /ot]	Krútiaci moment <sup>1)</sup> [Nm]	Max. tlak [MPa]	Min. / Max. Otáčky [ot/min]
	Externý odvod netesností 	Interný odvod netesností 				
XV-3M/15	X3M6631INNE	X3M6631INNF	14,89	20,14	32	700 / 3000
XV-3M/18	X3M6831INNE	X3M6831INNF	17,37	23,50	32	700 / 3000
XV-3M/21	X3M7031INNE	X3M7031INNF	21,10	28,54	30	700 / 3000
XV-3M/27	X3M7231INNE	X3M7231INNF	26,97	26,49	27	700 / 3000
XV-3M/32	X3M7431IOOE	X3M7431IOOF	32,27	43,66	27	700 / 3000
XV-3M/38	X3M7831IOOE	X3M7831IOOF	38,47	52,04	27	700 / 2800
XV-3M/43	X3M7931IOOE	X3M7931IOOF	43,44	58,77	27	700 / 2800
XV-3M/47	X3M8031IOOE	X3M8031IOOF	47,16	63,80	25	700 / 2800
XV-3M/51	X3M8131IOOE	X3M8131IOOF	50,88	68,83	25	700 / 2800
XV-3M/54	X3M8231IOOE	X3M8231IOOF	54,60	73,86	25	700 / 2300
XV-3M/61	X3M8331IPPE	X3M8331IPPF	60,81	82,26	25	700 / 2300
XV-3M/64	X3M8531IPPE	X3M8531IPPF	64,53	87,30	23	700 / 2300
XV-3M/70	X3M8631IPPE	X3M8631IPPF	70,74	95,70	22	700 / 2300
XV-3M/74	X3M8731IPPE	X3M8731IPPF	74,46	100,73	20	700 / 2300
XV-3M/90	X3M8931IPPE	X3M8931IPPF	86,87	117,52	17	700 / 2300

## Rozmery

Typ	Hmotnosť [kg]	A [mm]	B [mm]	D	E	F	G
XV-3M/15	7,010	124,0	61,0	Ø25	52,37	26,19	3/8-16UNC-2B
XV-3M/18	7,070	126,0	62,0	Ø25	52,37	26,19	3/8-16UNC-2B
XV-3M/21	7,150	129,0	63,5	Ø25	52,37	26,19	3/8-16UNC-2B
XV-3M/27	7,250	133,0	65,5	Ø25	52,37	26,19	3/8-16UNC-2B
XV-3M/32	7,390	138,0	68,0	Ø32	58,72	30,18	7/16-14UNC-2B
XV-3M/38	7,520	143,0	70,5	Ø32	58,72	30,18	7/16-14UNC-2B
XV-3M/43	7,630	147,0	72,5	Ø32	58,72	30,18	7/16-14UNC-2B
XV-3M/47	7,710	150,0	74,0	Ø32	58,72	30,18	7/16-14UNC-2B
XV-3M/51	7,790	153,0	75,5	Ø32	58,72	30,18	7/16-14UNC-2B
XV-3M/54	7,870	156,0	77,0	Ø32	58,72	30,18	7/16-14UNC-2B
XV-3M/61	8,010	161,0	79,5	Ø38	69,85	35,71	1/2-13UNC-2B
XV-3M/64	8,090	164,0	81,0	Ø38	69,85	35,71	1/2-13UNC-2B
XV-3M/70	8,220	169,0	83,5	Ø38	69,85	35,71	1/2-13UNC-2B
XV-3M/74	8,300	172,0	85,0	Ø38	69,85	35,71	1/2-13UNC-2B
XV-3M/90	8,570	182,0	90,0	Ø38	69,85	35,71	1/2-13UNC-2B



1) Hodnoty krútiaceho momentu platia pri 1000 ot/min a 10 MPa.  
- podrobnejšie údaje sú uvedené v katalógu č. 14/07/2009.

