

## Zubové hydrogenerátory XV-3P Ø101,6 SAE B s prír. prípojmi

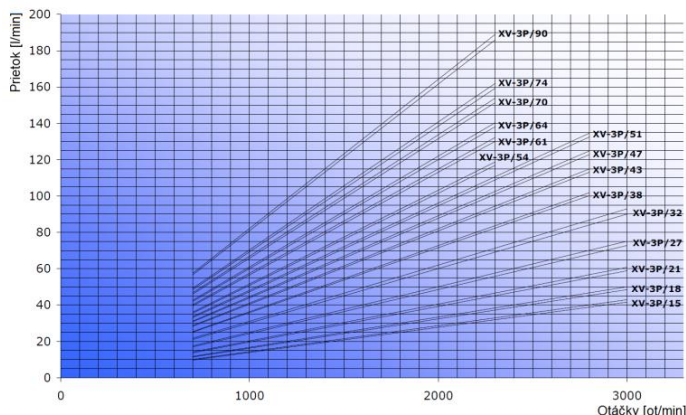
Geometrický objem	14,89 ... 86,87 cm <sup>3</sup> /ot
Max. pracovný tlak	32 MPa
Rozsah otáčok	700 ... 3000 ot/min
Rozsah prac. teplôt	- 20 ÷ 60 °C
Odporúčaná viskozita	20 ... 100 mm <sup>2</sup> /s

### TECHNICKÉ ÚDAJE

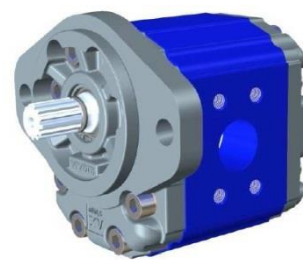
Typ	Objednávacie číslo		Geom. objem [cm <sup>3</sup> /ot]	Tlak Trvalý/Max. [MPa]	Otáčky Min./Max. [ot/min]
	Ľavotočivé	Pravotočivé			
XV-3P/15	X3P6601AAAA	X3P6602AAAA	14,89	30/32	700 / 3000
XV-3P/18	X3P6801AAAA	X3P6802AAAA	17,37	30/32	700 / 3000
XV-3P/21	X3P7001AAAA	X3P7002AAAA	21,10	28/30	700 / 3000
XV-3P/27	X3P7201AAAA	X3P7202AAAA	26,97	25/27	700 / 3000
XV-3P/32	X3P7401ABBA	X3P7402ABBA	32,27	25/27	700 / 3000
XV-3P/38	X3P7801ABBA	X3P7802ABBA	38,47	25/27	700 / 2800
XV-3P/43	X3P7901ABBA	X3P7902ABBA	43,44	25/27	700 / 2800
XV-3P/47	X3P8001ABBA	X3P8002ABBA	47,16	23/25	700 / 2800
XV-3P/51	X3P8101ABBA	X3P8102ABBA	50,88	23/25	700 / 2800
XV-3P/54	X3P8201ABBA	X3P8202ABBA	54,60	23/25	700 / 2300
XV-3P/61	X3P8301ACCA	X3P8302ACCA	60,81	23/25	700 / 2300
XV-3P/64	X3P8501ACCA	X3P8502ACCA	64,53	21/23	700 / 2300
XV-3P/70	X3P8601ACCA	X3P8602ACCA	70,74	20/22	700 / 2300
XV-3P/74	X3P8701ACCA	X3P8702ACCA	74,46	18/20	700 / 2300
XV-3P/90	X3P8901ACCA	X3P8902ACCA	86,87	15/17	700 / 2300

### ROZMERY

Typ	Hmotnosť	A	B	D	E	F	D	E	F
	[kg]	[mm]	[mm]	Sanie			Výtlak		
XV-3P/15	7,010	124,0	61,0	Ø20	40	M8	Ø20	40	M8
XV-3P/18	7,070	126,0	62,0	Ø20	40	M8	Ø20	40	M8
XV-3P/21	7,150	129,0	63,5	Ø20	40	M8	Ø20	40	M8
XV-3P/27	7,250	133,0	65,5	Ø20	40	M8	Ø20	40	M8
XV-3P/32	7,390	138,0	68,0	Ø27	51	M10	Ø27	51	M10
XV-3P/38	7,520	143,0	70,5	Ø27	51	M10	Ø27	51	M10
XV-3P/43	7,630	147,0	72,5	Ø27	51	M10	Ø27	51	M10
XV-3P/47	7,710	150,0	74,0	Ø27	51	M10	Ø27	51	M10
XV-3P/51	7,790	153,0	75,5	Ø27	51	M10	Ø27	51	M10
XV-3P/54	7,870	156,0	77,0	Ø27	51	M10	Ø27	51	M10
XV-3P/61	8,010	161,0	79,5	Ø36	62	M10	Ø36	62	M10
XV-3P/64	8,090	164,0	81,0	Ø36	62	M10	Ø36	62	M10
XV-3P/70	8,220	169,0	83,5	Ø36	62	M10	Ø36	62	M10
XV-3P/74	8,300	172,0	85,0	Ø36	62	M10	Ø36	62	M10
XV-3P/90	8,570	182,0	90,0	Ø36	62	M10	Ø36	62	M10



- podrobnejšie údaje sú uvedené v katalógu č. 14/07/2009.



2

