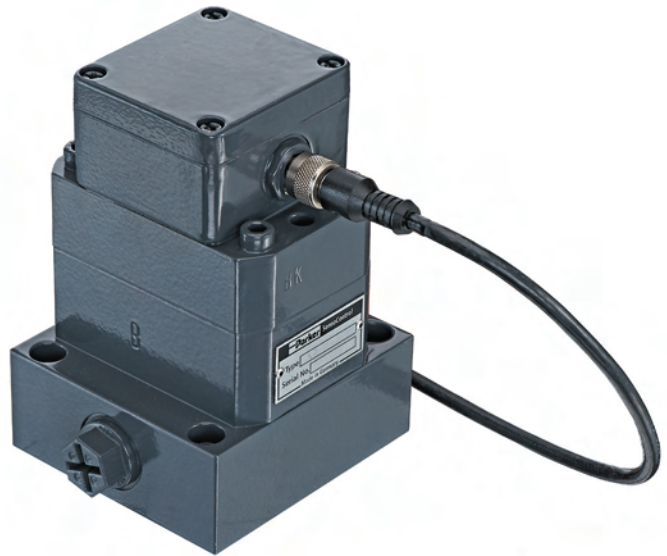


## Volume meter SCVF

- Volume meter
- 4 measuring ranges of up to 300 l/min
- Measuring accuracy  $\pm 0.5$  % FS
- Pressure resistant up to 400 bar
- High viscosity range
- Low noise level



### Volume meter for high-precision flow measurement in hydraulic plants

#### Function

The SCVF is a volume meter. The fluid flow drives a precision-manufactured pair of gearwheels.

The SCVF operates in a wide viscosity range. A variety of seals make many applications possible.

#### Applications

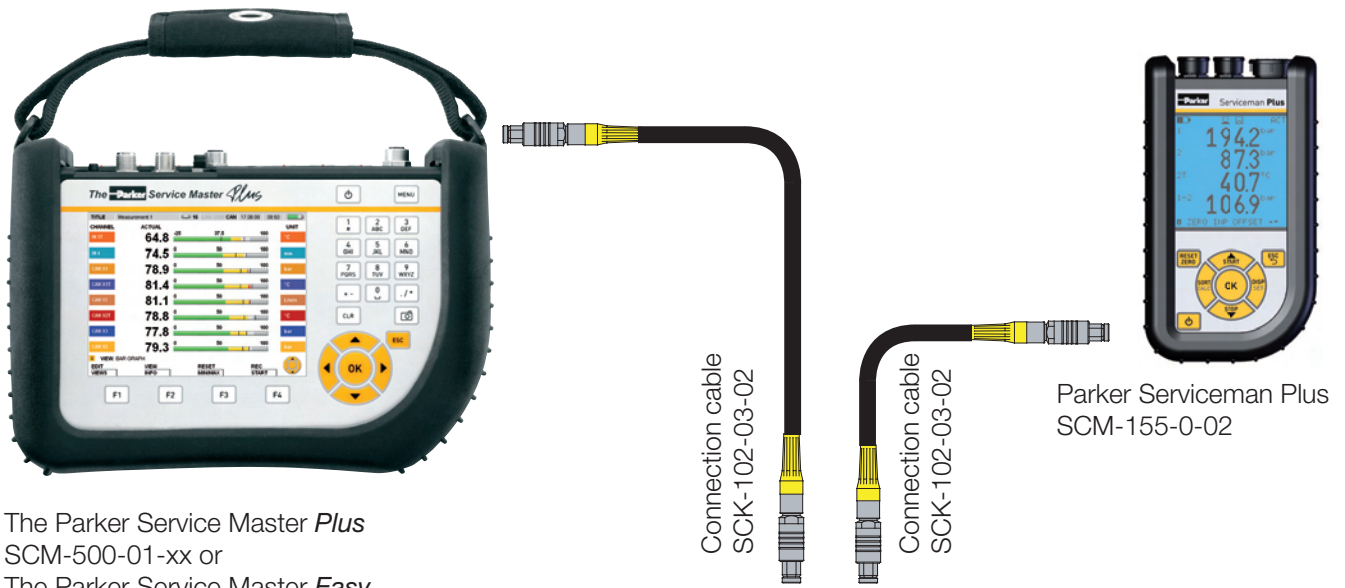
The high viscosity range enables measuring of all fluids that are pumpable and have a certain degree of lubricity:

- Mineral oils
- Hydraulic oils
- Greases
- Brake fluids (EPDM sealing)
- Skydrol (special version)

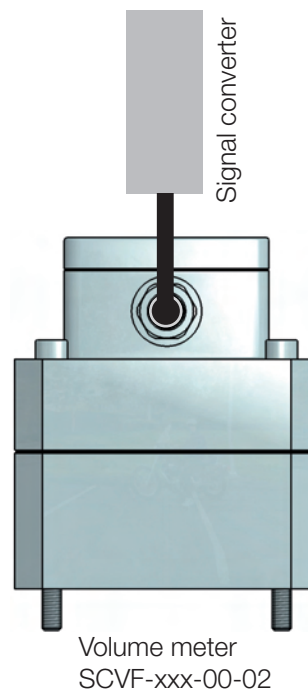
The volume meter SCVF is the ideal solution for accurately measuring flow across a large viscosity range.

# 19 Volume meter SCVF

## Function specifications



The Parker Service Master *Plus*  
SCM-500-01-xx or  
The Parker Service Master *Easy*  
SCM-330/340



## Technical data

Type	SCVF-015	SCVF-060	SCVF-150	SCVF-300
Flow range $Q_N$ (l/min)	0.2...15	0.4...60	0.6...150	1.0...300
Maximum measuring range $Q_{max}$ (l/min)	16.5	66	165	330
Operating pressure $P_N$ (bar)	400	400	315	315
Overload pressure $P_O$ (bar)	480	480	350	350
Connection	G3/8 BSPP	G1/2 BSPP	G1 BSPP	G1 BSPP
Weight (kg)	3.8	8.1	23	27

### Accuracy

Deviation from characteristic curve	$\pm 0.5$ % FS from 20 cSt.
Response time	after 400 ms

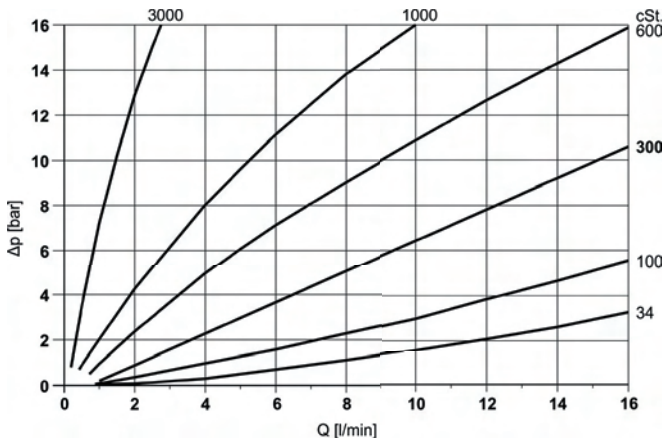
### Material

Housing	Casting GGG40
Seal	FKM
Parts in contact with media	FKM, steel, GGG40
Type of protection	IP65 EN 60529

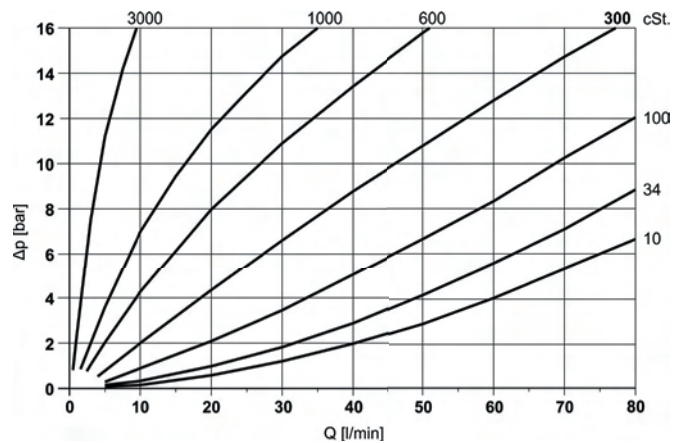
### Ambient conditions

Ambient temperature (°C)	-15...+80
Storage temperature (°C)	-15...+80
Media temperature (°C)	-15...+120
Viscosity range	from approx. 1 cSt.
Filtration	20 $\mu$ m

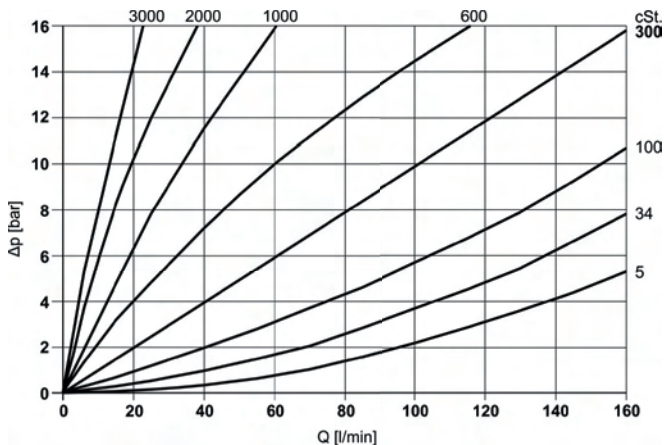
SCVF-015  $\Delta p$  viscosity



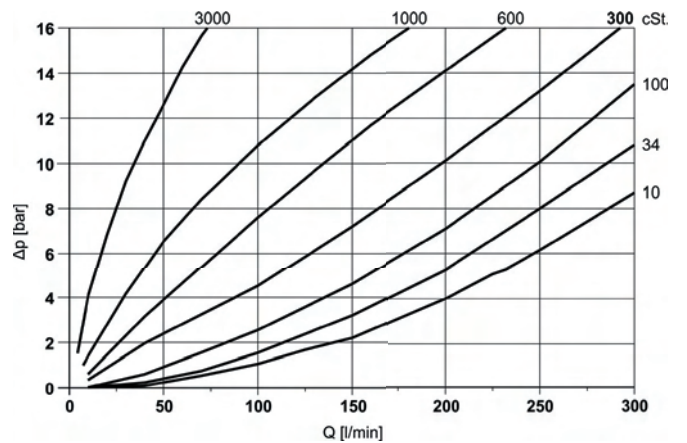
SCVF-060  $\Delta p$  viscosity



SCVF-150  $\Delta p$  viscosity

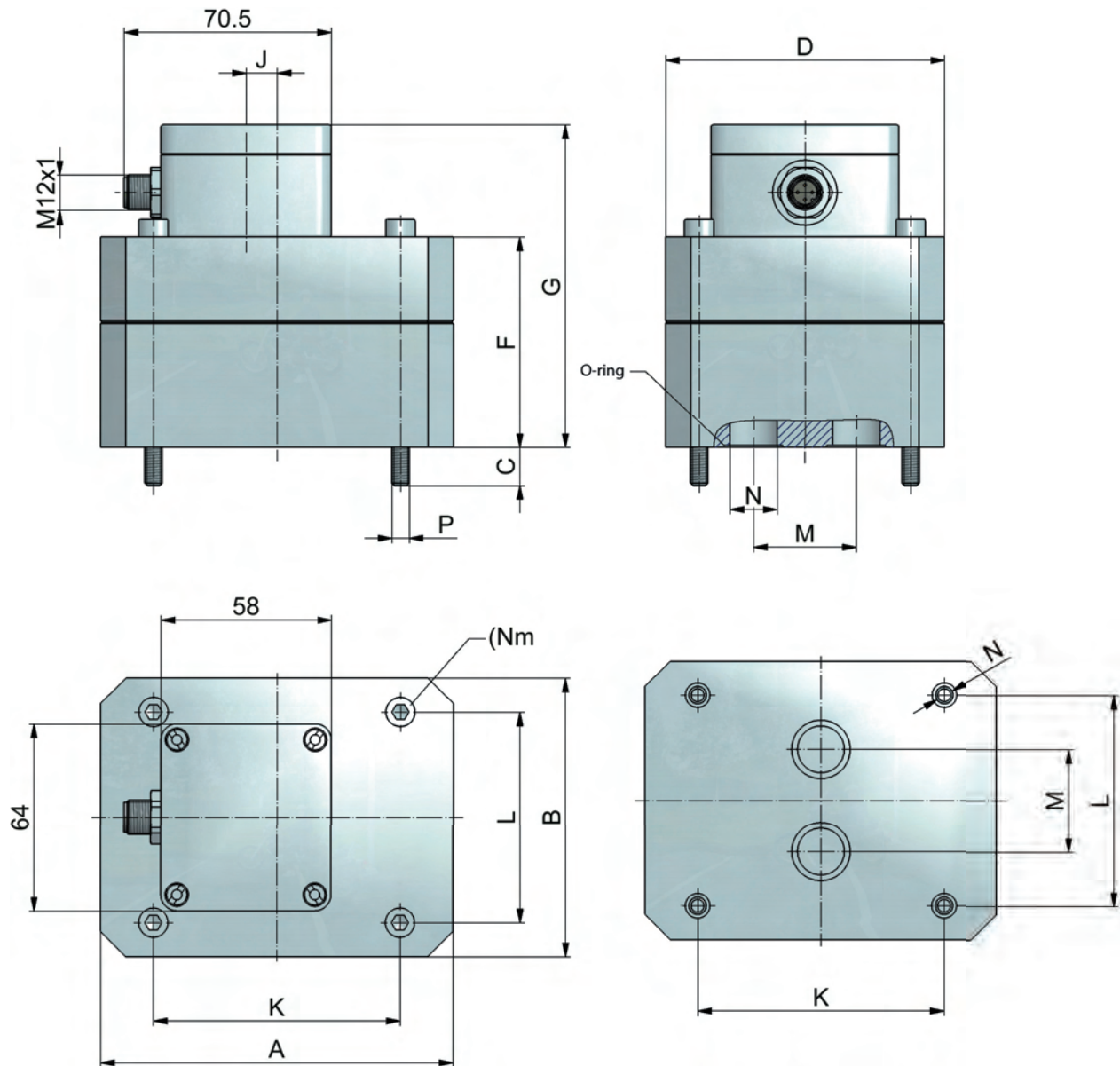


SCVF-300  $\Delta p$  viscosity



# 19 Volume meter SCVF

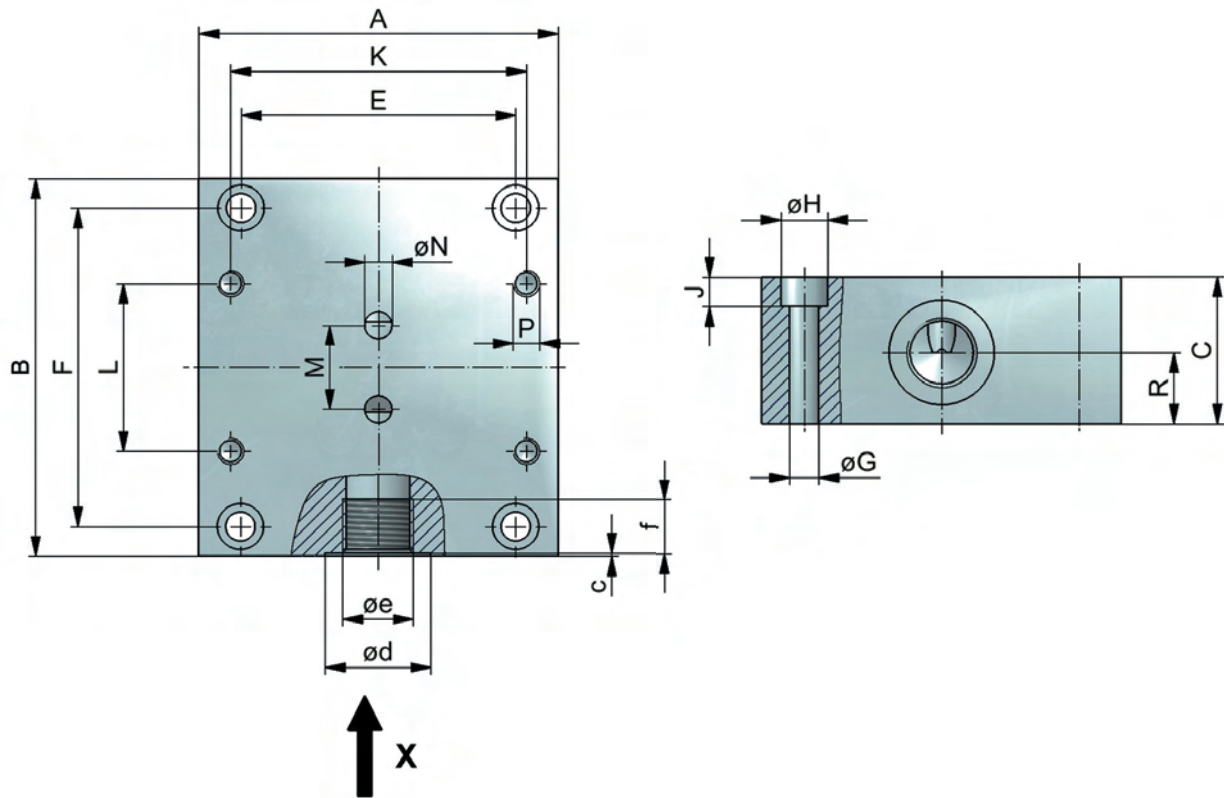
## Dimensional drawings



Type	Weight (kg)	Torque (Nm)	A	B	C	D	F	G	J	K	L	M	øN	P
SCVF-015	2	14	85	60	13	60	57	95	-	70	40	20	9	M6
SCVF-060	5.2	35	120	95	13	95	72	110	10,5	84	72	35	16	M8
SCVF-150	9	120	170	120	18	120	89	127	46,5	46	95	50	25	M12
SCVF-300	13	120	170	120	18	120	105	143	40	46	95	50	25	M12

All dimensions in mm

## Dimensional drawings and order codes



Type	(kg)	A	B	C	E	F	øG	øH	J	K	L	M	øN	P	R	C	ød	øe BSPP	F
SCVF-015	1.8	85	90	35	65	76	7	11	7	70	40	20	6.5	M6/t = 14	17	0.7	25	G3/8	13
SCVF-060	2.9	100	120	37	80	106	7	11	7	84	72	35	12	M8/t = 18	17.5	0.7	29	G1/2	15
SCVF-150 SCVF-300	14	160	165	80	140	145	9	15	9	46	95	50	25	M12/t = 24	28	1	42	G1	19

All dimensions in mm

## Supply range and accessories

SCVF incl. connection plate with signal converter	Order code
0.1...015 l/min	SCVF-015-00-02
0.4...060 l/min	SCVF-060-00-02
0.4...150 l/min	SCVF-150-00-02
1.0...300 l/min	SCVF-300-00-02

SCK analogue connection cable	Order code
3 m (male 5 pin - male 5 pin)	SCK-102-03-02
5 m (male 5 pin - male 5 pin)	SCK-102-05-02
5-m extension cable (male 5 pin - female 5 pin)	SCK-102-05-12